

Saturday, 03rd May 2025 (13 Vaisakha 1947 Saka)

Summary of observations recorded at 0830 hours IST: A fresh Western Disturbance as a cyclonic circulation lay over north Pakistan & neighbourhood between 3.1 & 7.6 km above m. s. l. An upper air cyclonic circulation lay over northwest Rajasthan & neighbourhood at 1.5 km above m. s. l. An upper air cyclonic circulation lay over west Uttar Pradesh & neighbourhood at 1.5 km above m. s. l. The upper air cyclonic circulation over southwest Rajasthan & neighbourhood lay over southeast Rajasthan & neighbourhood at 0.9 km above m. s. l. The north-south trough from Punjab to north Kerala ran from the cyclonic circulation over southeast Rajasthan & neighbourhood to south Tamil Nadu across Gujarat, Maharashtra, Interior Karnataka at 0.9 km above m. s. l. The east-west trough from the cyclonic circulation over northeast Rajasthan and adjoining northwest Madhya Pradesh to Bangladesh ran from the cyclonic circulation southeast Rajasthan & neighbourhood to north Odisha across Madhya Pradesh, Chhattisgarh, Jharkhand which extended up to 1.5 km above m. s. l. An upper air cyclonic circulation lay over northeast Assam & neighbourhood at 1.5 km above m. s. l. The upper air cyclonic circulation over north Bangladesh and neighbourhood persisted and which extended upto 1.5 km above m. s. l. The Western Disturbance as a cyclonic circulation over south Punjab and adjoining north Rajasthan and west Haryana between 5.8 & 7.6 km above m. s. l. moved away east-northeastwards. The upper air cyclonic circulation over northeast Rajasthan and adjoining northwest Madhya Pradesh became less marked. The trough upper tropospheric westerlies with its axis at 7.6 km above m. s. l. ran roughly along Long. 90°E to the north of Lat. 22°N moved away eastwards.

Day temperatures were above normal (1.6°C to 3.0°C) at isolated places over Jammu-Kashmir-Ladakh-Gilgit-Baltistan-Muzaffarabad, Gujarat state, Konkan & Goa, Madhya Maharashtra, Marathwada, Vidarbha, north interior Karnataka, Assam & Meghalaya, Nagaland. These were markedly below normal (-5.1 or below) at most places over Haryana-Chandigarh-Delhi, west Uttar Pradesh, Uttarakhand, Punjab; at many places over Himachal Pradesh; at a few places over Rajasthan, east Uttar Pradesh, west Madhya Pradesh; at isolated places over Jharkhand, Odisha; appreciably below normal (-3.1°C to -5.0°C) at many places over few places over east Madhya Pradesh; at isolated places over Chhattisgarh, Gangetic West Bengal, Bihar; below normal (-1.6°C to -3.0°C) at isolated places over Rayalaseema, coastal Andhra Pradesh & Yanam and normal over rest parts of the country. **Yesterday, the highest maximum temperature of 44.9°C was reported at Akola (Vidarbha) over the country.**

Hailstorm occurred at isolated places over east Madhya Pradesh, Telangana.

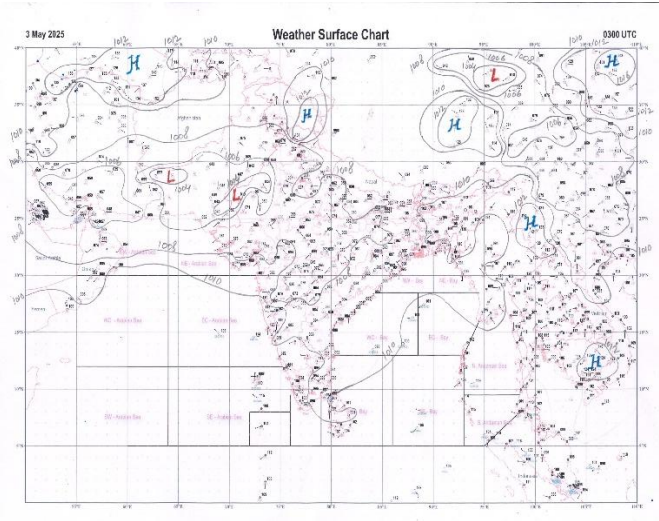


Fig.1. Analysed surface chart based on 03z observation

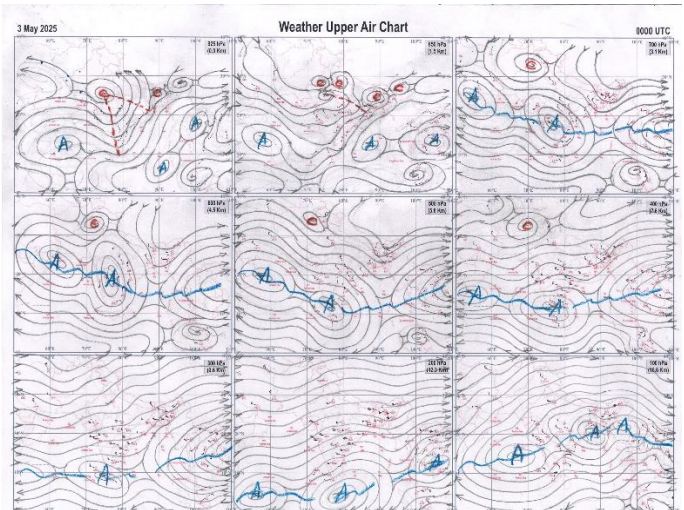


Fig.2. Analysed upper air chart based on 00z observation

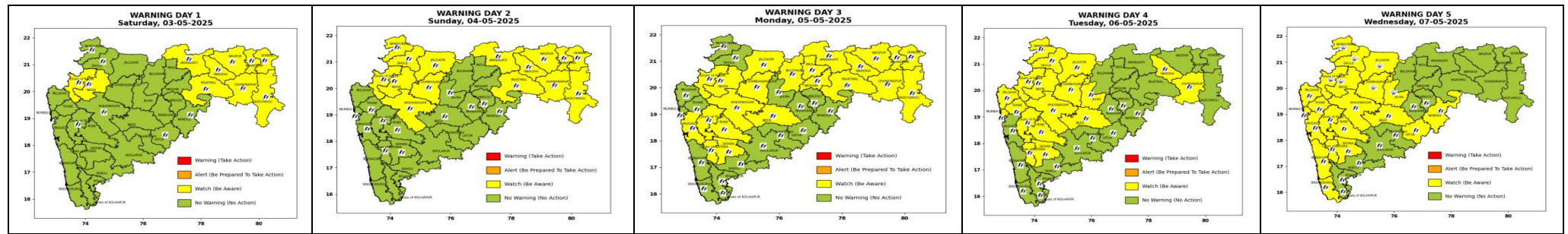
Indian regions	Realised rainfall (chief amount in cm during past 24 hrs):
East	many places: Nagaland-Manipur-Mizoram-Tripura+ a few places: Sub-Himalayan West Bengal & Sikkim isolated places: Arunachal Pradesh, Assam & Meghalaya and Jharkhand dry weather: Gangetic West Bengal, Odisha and Bihar Champai AWS 7.3, Lengpui 5.3, Ashapara AWS 3.9, Nongstein 3.5, Gangtok 1.5, Umrangso & Shillong CSO 1.2 each, Chepan & Darjeeling 1.1 each, Kalebira 0.6, Tawang AWS 0.4, Seppa 0.2.
North	a few places: Jammu-Kashmir and Ladakh isolated places: Uttar Pradesh, Uttarakhand+, Haryana, Punjab, Himachal Pradesh, west Rajasthan and east Rajasthan ♦ Joshimath 9.0, Haripur 5.6, Laksar 4.0, Dehra gopipur 3.7, Udhampur (iaf) 3.1, Bulandshahr, Larnoo ARG & Govindpura AWS 3.0 each, Etawah 2.0, Paonta & Simla 1.7 each, Kasganj 1.4, Tajewala 1.1, Sawayajpur, Nuh & Bhopalgarh SR 1.0 each, Delhi ridge, Aliwal & Dhariwal irr 0.4 each, Sitapur, Sangrur & Tapukara 0.1 each.
Central	isolated places: Madhya Pradesh and Chhattisgarh dry weather: Vidarbha Gormi 1.8, Lahar 1.5, Deokar 1.1, Rengakhar kala 0.7, Bhind-aws 0.6, Benibari, Chhapara & Mandla 0.4 each.
Peninsula	many places: south interior Karnataka+ and Kerala+ a few places: Rayalaseema and coastal Kamataka isolated places: coastal Andhra Pradesh, Telangana, Tamil Nadu and north interior Karnataka dry weather: Gujarat State, Konkani & Goa, Madhya Maharashtra and Marathwada Vellayani AWS 9.9, Honnali 9.3, Trivandrum AP 8.7, Airport chakka ARG 7.5, Davanagere 5.5, Chikkamagaluru PTO 5.4, Kuzhithurai & Hirekerur 5.1 each, Vembakottai 4.8, Singanamala 4.3, Dornipadu 3.8, Bhuvanagiri & Bhoothpur 3.2 each, Anantpur, Belthangadi & Gangavathi 2.9 each, Coonoor 2.7, Sulya 2.6, Bestavaripeta 1.8, Seetharamapuram 1.4, Haveri PTO 0.3.
Islands	a few places: Andaman & Nicobar and Lakshadweep Port Blair 1.9, Minicoy 0.8, Maya bandar 0.6.

Table 2. Forecast / warnings (distribution of rain / thundershowers) for 7 days (valid from time of origin upto 0830 hrs IST of next day)

Sr. No	Sub-division Name	Day 1 03 May	Day 2 04 May	Day 3 05 May	Day 4 06 May	Day 5 07 May	Day 6 08 May	Day 7 09 May	Sr. No.	Sub-division Name	Day 1 03 May	Day 2 04 May	Day 3 05 May	Day 4 06 May	Day 5 07 May	Day 6 08 May	Day 7 09 May
1	Andaman Nicobar Islands	I	F	S	W	W	S	F	19	west Madhya Pradesh	I R	I R	S R	S R	I R	I	I
2	Arunachal Pradesh	S R	F R	W + R	W + R	W + R	W +	F	20	east Madhya Pradesh	I R	S R	S R	S R	I R	I	I
3	Assam-Meghalaya	S R	F R	F + R	W + R	W + R	W +	F	21	Gujarat region	I R	S R	S R	F R	F + R	F + R	S
4	Nagaland-Manipur-Mizoram-Tripura	W R	W R	F R	F R	F R	S	S	22	Saurashtra and Kutch	I R	I R	S	F	F +	F + R	S
5	Sub Himalayan West Bengal/Sikkim	S R	F R	F R	F R	F	S	S	23	Konkan and Goa	D	I	I R	I R	I R	I R	I R
6	Gangetic West Bengal	F R	S R	S R	S R	I	I	D	24	Madhya Maharashtra	I R	I R	I R	S R	S R	I R	I R
7	Odisha	F + R	F + R	S R	S R	I	I	I	25	Marathwada	I	I R	I R	I R	I R	I R	I R
8	Jharkhand	S R	S R	S R	I R	D	D	D	26	Vidarbha	I R	I R	S R	I R	I R	I	I
9	Bihar	I R	S R	S R	I R	I R	I	D	27	Chhattisgarh	S R	S R	I R	I R	I R	I	I
10	east Uttar Pradesh	S R	F R	F R	F R	I R	D	D	28	Coastal Andhra Pradesh and Yanam	S R	S R	F R	F R	I R	I	I
11	west Uttar Pradesh	S R	F R	F R	F R	S R	I	D	29	Telangana	S R	S R	S R	S R	S R	I	I
12	Uttarakhand	F R	F R	F R	F R	S R	S	S	30	Rayalaseema	S	S	S R	S R	S	I	I
13	Haryana, Chandigarh and Delhi	S R	S R	F R	S R	I R	I R	I R	31	Tamil Nadu, Puducherry and Karaikal	I R	S R	S R +	S R +	S R	S	I
14	Punjab	S R	S R	F R	S R	I R	I R	I R	32	Coastal Karnataka	S R	I R	I R	S R	S R	S	I
15	Himachal Pradesh	F R	F R	F R	S R	S R	S R	S R	33	North interior Karnataka	I R	I R	I R	S R	I R	I	I
16	Jammu-Kashmir and Ladakh	F R	F R	S R	I	I	I	I	34	South interior Karnataka	F + R	S R	I R	S R	S R	S	I
17	west Rajasthan	I R	I R	S R	S + R	I + R	I R	I R	35	Kerala and Mahe	S + R	S R	F R	F + R	F + R	S	S
18	east Rajasthan	I R	I R	I R	S R	I R	I R	I R	36	Lakshadweep	F R	S	S	S	S	S	S

Legends: D = Dry I = Isolated S = Scattered F = Fairly widespread W = Widespread # = heavy to very heavy rain at a few places with extremely heavy rain at isolated places +++ = heavy rain at a few places with very heavy rain at isolated places ++ = heavy to very heavy rainfall @ = isolated exceptionally heavy rainfall + = heavy rain •/• = rain or snow ♦ = very light rain = = fog R = thunderstorm with lightning = = Squall / Gusty / gale / strong wind = = cold wave/cold day += heat wave/warm night/hot and humid weather = = Duststorm = = ground frost = = Hail

Fig. 4: Districtwise warnings for five days for Maharashtra State



Pune, Lohegaon and Pashan observations at 0830 hrs. IST of Today

	Temperature (°C)					Humidity (%)				Rainfall (mm)		
	Max. past 24 hrs	Dep. from normal	Min. past 24 hrs.	Dep. from normal	Dry Bulb	At 0830 hrs. IST	Dep. From normal	At 1730 hrs. IST of y'day	Dep. from normal	Past 24 hrs.	Since 1 st Mar	Dep. from normal
PNE	40.6	2.1	25.3	3.7	30.0	27	-23	16	-12	0.0	7.5	-8.8
PSN	40.8	-	-	-	-	-	-	20	-	0.0	21.3	-
LHG	43.2	5.2	25.6	4.6	32.0	17	-36	11	-16	0.0	0.6	-18.2

Local (Pune and neighbourhood) forecast

Max. / Min. Temperature (°C)									Weather
Date	Pune	Pashan	Lohegaon	Chinchwad	Lavale	Magarpatta	NDA	Koregaon Park	
03/05/25	39 / 25.3*	39 / --	41 / 25.6*	38 / 25.8*	37 / 24.9*	39 / 27.2*	37 / 21.0*	39 / 26.7*	Mainly clear sky.
04/05/25	39 / 25	40 / 25	42 / 26	37 / 26	37 / 25	38 / 27	37 / 21	38 / 27	Mainly clear sky becoming partly cloudy sky towards afternoon or evening.
05/05/25	39 / 25	39 / 25	41 / 26	37 / 26	37 / 25	38 / 27	37 / 21	38 / 27	Mainly clear sky becoming partly cloudy sky towards afternoon or evening.
06/05/25	38 / 26	38 / 26	41 / 27	36 / 27	36 / 26	37 / 28	36 / 22	37 / 28	Partly cloudy sky becoming generally cloudy sky towards afternoon/evening. Thunderstorm & Lightning, light rain likely.
07/05/25	38 / 26	38 / 26	41 / 27	36 / 27	36 / 26	37 / 28	36 / 22	37 / 28	Partly cloudy sky becoming generally cloudy sky towards afternoon/evening. Thunderstorm & Lightning, light rain likely.
08/05/25	37 / 26	37 / 26	40 / 27	36 / 27	36 / 26	37 / 28	36 / 22	37 / 28	Partly cloudy sky becoming generally cloudy sky towards afternoon/evening. Thunderstorm & Lightning, light rain likely.
09/05/25	37 / 25	37 / 25	40 / 26	36 / 26	36 / 25	37 / 27	36 / 21	37 / 27	Partly cloudy sky becoming generally cloudy sky towards afternoon/evening. Thunderstorm & Lightning, light rain likely.

* = realized temperature

Mumbai (Colaba)				Nagpur (AP)		
Date 2025	T max °C	T min °C	Weather	T max °C	T min °C	Weather
03/05	33	27	Partly cloudy sky towards afternoon or evening.	42	26	Rain or thundershowers with strong gusty winds. Thunderstorm & Lightning.
04/05	33	27	Generally cloudy sky with Light Rain or Drizzle.	41	26	Rain or thundershowers with strong gusty winds. Thunderstorm & Lightning.
05/05	32	26	Rain or thundershowers would occur towards afternoon or evening.	41	26	Rain or thundershowers with strong gusty winds. Thunderstorm & Lightning.
06/05	31	25	Thunderstorm with rain.	41	25	Partly cloudy sky towards afternoon or evening.
07/05	31	25	Thunderstorm with rain.	40	25	Partly cloudy sky towards afternoon or evening.
08/05	32	25	Partly cloudy sky.	40	26	Partly cloudy sky with haze.
09/05	32	25	Partly cloudy sky.	41	27	Partly cloudy sky with possibility of rain or Thunderstorm.

Rainfall Distribution		Rainfall Categories		Cloud condition		Rainfall Intensity	
Widespread (W)	76-100%	Very Light rain	Trace to 2.4 mm	Mainly clear sky	1-2 oktas	Light Spell	1 cm/hr
Fairly Widespread (FW)	51 – 75%	Light rain	2.5 to 15.5 mm	Partly cloudy sky	3-4 oktas	Moderate Spell	1-2 cm/hr
Scattered (S)	26 – 50%	Moderate rain	15.6 to 64.4 mm	Generally cloudy sky	5-7 oktas	Intense Spell	2-3 cm/hr
isolated (I)	1 – 25%	Heavy rain	64.5 to 115.5 mm	Overcast	8 oktas	Very Intense Spell	3-5 cm/hr
D (D)	No Rain	Very heavy rain	115.6 to 204.4 mm			Extremely Intense Spell	5-10 cm/hr
Probability Terms in %:		Extremely heavy rain	≥ 204.5 mm			Cloudburst	> 10 cm/hr
unlikely	< 25	Heavy snow	6.5 to 11.5 cms water equivalent of rain				
likely	between 25 50	Very heavy snow	11.6 to 20.4 cms water equivalent of rain				
very likely	between 51 75						
most likely	>75						